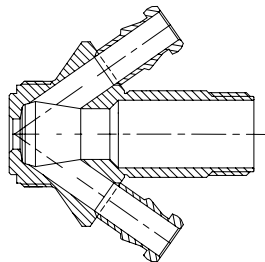
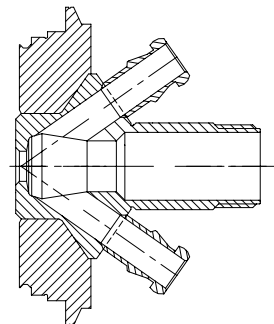


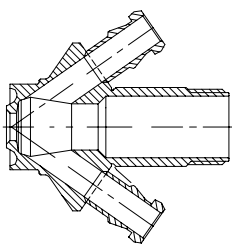
Valve body Type S  
Item no.: 850031



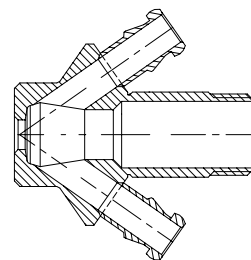
Valve body Type V  
Item no.: 850009



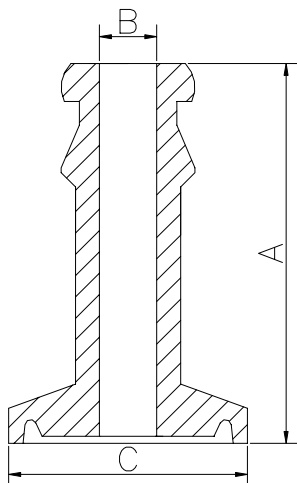
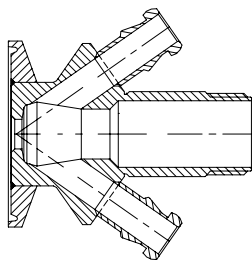
Valve body Type P  
Item no.: 850011



Valve body Type T  
Item no.: 850001



Valve body Type C  
Item no.: 850021



Where to use :

W9 hose piece and Mini Tri-Clamp

Use for:

To add W9 hose piece to a pipe with mini Tri Clamp.

Connections:

W9 and Mini Tri-Clamp

**Material:**

Steel parts:

AISI 316L (1.4404)

**Key measurements**

Drawing part A:

40 mm. 1.57 In.

Drawing part B:

Ø6 mm. Ø0.24 In.

Drawing part C:

Ø25 mm. Ø0.98 In.

Net weight:

0.025 kg./pc 0.051lb

Working pressure depends on choice of valve head.

Working temperature depends on choice of valve head.