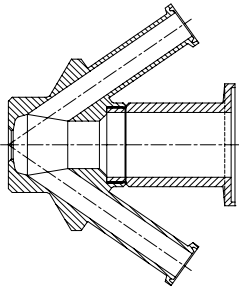
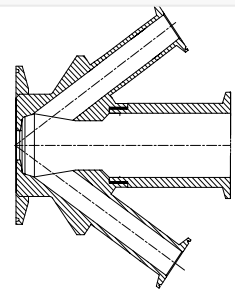


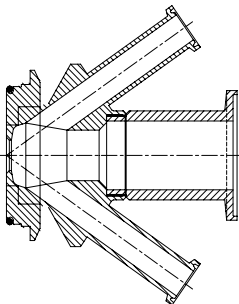
Valve body W 15 Type T  
Item no.: 860001



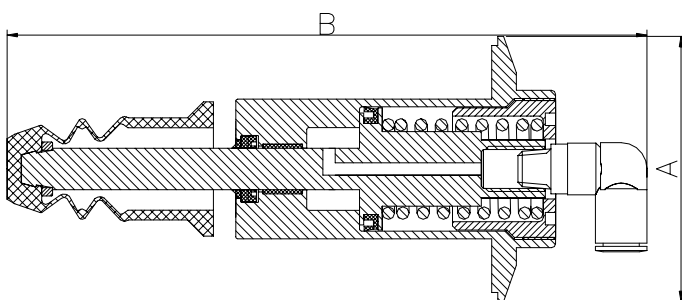
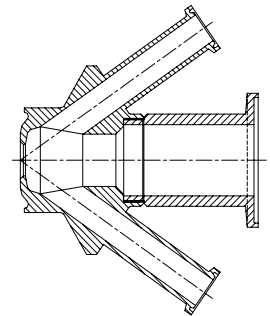
Valve body W 15 type C 3"  
Item no.: 860003



Valve body W 15 Varivent ø68  
Item no.: 860009



Valve body W 15 type P  
Item no.: 860011



<b>Where to use :</b>	With Valves bodies W15	
<b>How to use:</b>	Pneumatically operated	
<b>Installation:</b>	Fastened in Valve body with clamp	
<b>Material:</b>		
Steel Parts:	AISI 302 / 304 / 316L(1.4404)	
Membrane	FDA approved PTFE	
O-rings and other	NBR and PTFE	
<b>Key measurements</b>		
Drawing part A:	64 mm.	2.52 In.
Drawing part B:	155 mm.	6.11 In.
Net weight:	0.6 kg./pc	1.32 lb
Temp. range:	1 <sup>0</sup> C - 150 <sup>0</sup> C	34°F - 302°F
Product pressure range:	0 - 6 bar(g)	0 - 87 psi(g)
Air supply pressure range:	5 - 7 bar(g)	73 - 101 psi(g)