

I40 Valves  
Item no. 310055  
(56mm)



I52 Valves  
Item no. 320055 (68mm)



M4 Valves  
Item no. 400055 (20mm)



W9 Valves  
Item no. 850055 (32mm)



W15 Valves  
Item no. 860055 (51mm)



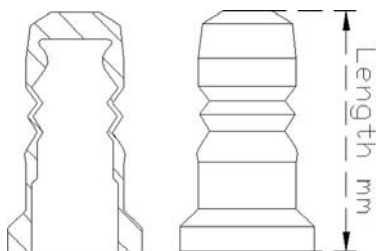
W25 Valves  
Item no. 870055 (83,5mm)

**Technical Specification:**

Material:	TFM 1600 PTFE
Colour	White
Range of temperature in dry atmospheric air.	-200 - +200°C -328 - + 392°F
Ball hardness (N/mm <sup>2</sup> )	29
Tensile strength (DIN53455 - N/mm <sup>2</sup> )	35
Elongation at break (DIN53455 - %)	350
Density (DIN 53479 - g/cm <sup>3</sup> )	2.17
Shore D (DIN 53505)	57
Thermal conductivity (W/m.k DIN 57572)	0.25-0.5
Expansion Coefficient (DIN 52612)	9-12x10 <sup>-5</sup> K <sup>-1</sup>
Friction coefficient	very low (<0.1)
Flammability	Inflammable UL 94VO
Chemical resistance	*
Food safe	Yes (FDA**)
* Is not attacked by common chemicals, with the exception of strongly oxidising acids.	
**FDA approved compound according to Code of Federal Regulations Title 21 - § 177.1550	

Keofitt guaranties 1 year of lasting by normal use means (silicone has to be changed appr. every 2-3 months):

Temp. max:.....121°C / 250°F  
 Steam pressure max:....2 bar(g) / 29 psi  
 Process pressure.....1-6 bar / 14-87 psi  
 Cip.....Nho4 < 3% or similar  
 Samples.....1-5 a day



Parts Needed to change from Silicone to PTFE			
W9	M4	I40	I52
600340	400340	310340	320340
600411	400055	310055	320055
850055			