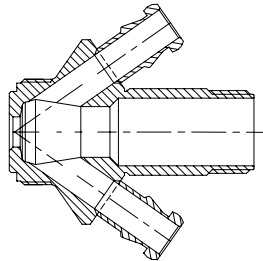
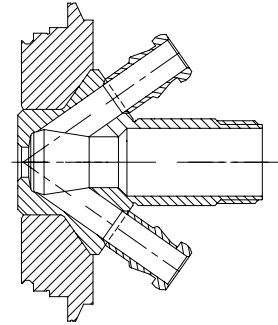


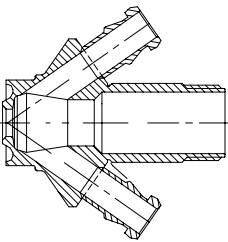
Valve body Type S  
 Item no.: 850031



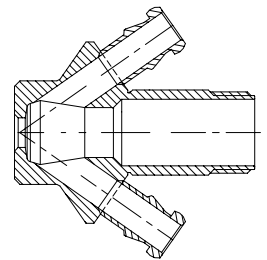
Valve body Type V  
 Item no.: 850009



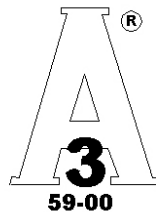
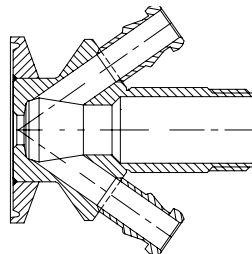
Valve body Type P  
 Item no.: 850011



Valve body Type T  
 Item no.: 850001



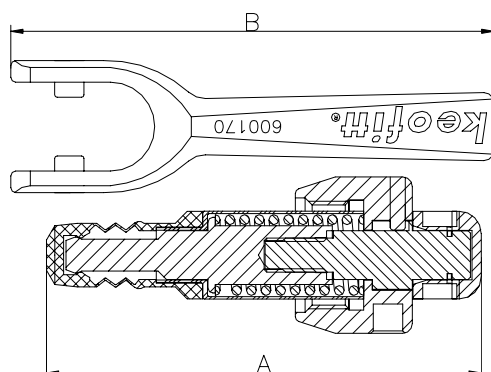
Valve body Type C  
 Item no.: 850021



**Available with:**  
 Silicone membrane  
 Item no.: 600051  
 See 600043

EPDM membrane  
 Item no.: 600052  
 See 600043

PTFE membrane  
 Item no.: 850055



Where to use :	W9 Valve bodies	
How to use:	Manually operated	
Installation:	Screwed in Valve body	
<b>Material:</b>		
Steel Parts:	AISI 304 / 316 / 316L(1.4404)	
Membrane	FDA approved PTFE	
<b>Key measurements</b>		
Drawing part A:	89 mm.	3.5 In.
Drawing part B:	94 mm.	3.7 In.
Net weight:	0.34 kg./pc	0.75 lb
Temp. range:	1° C - 150° C	34°F - 302°F
Product pressure range:	0 - 6 bar(g)	0 - 87 psi(g)