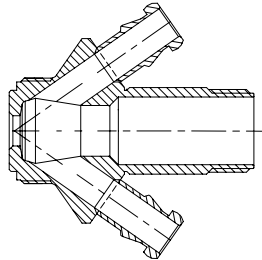
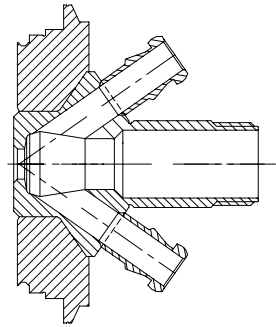


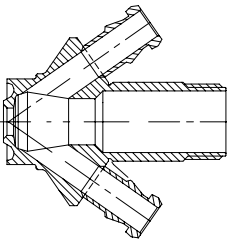
Valve body Type S
 Item no.: 850031



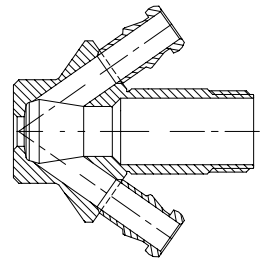
Valve body Type V
 Item no.: 850009



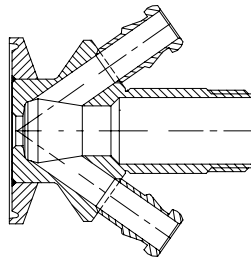
Valve body Type P
 Item no.: 850011



Valve body Type T
 Item no.: 850001



Valve body Type C
 Item no.: 850021



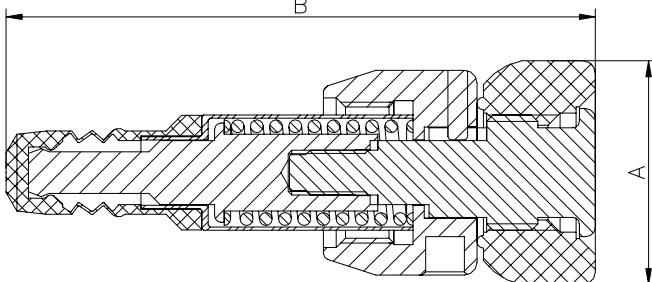
Available with:
 Silicone membrane
 Item no.: 600051
 See 600041



EPDM membrane
 Item no.: 600052
 See 600041



PTFE membrane
 Item no.: 850055



Where to use :	All W9 valve bodies.	
How to use:	Manually operated	
Installation:	Screwed in Valve body	
Material:		
Steel Parts:	AISI 304 / 316 / 316L(1.4404)	
Membrane	FDA approved PTFE	
Knob:	PEHD/black	
Key measurements		
Drawing part A:	35 mm.	1.38 In.
Drawing part B:	89 mm.	3.5 In.
Net weight:	0.25 kg./pc	0.55 lb
Temp. range:	1 ^o C - 150 ^o C	34°F - 302°F
Product pressure range:	0 - 6 bar(g)	0 - 87 psi(g)