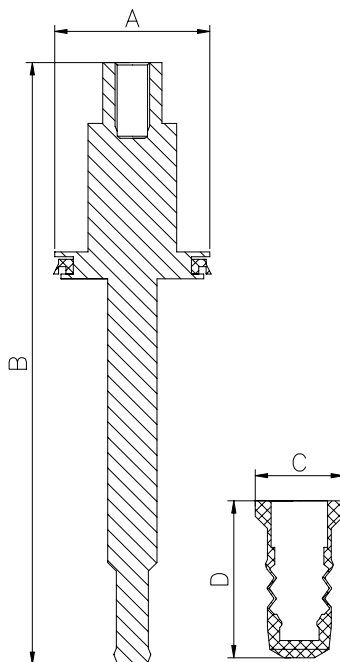
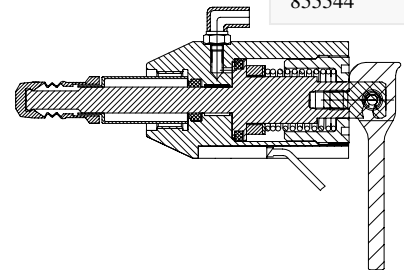




Valve head Type N  
Item no.: 600044/  
855544



<b>Where to use :</b>	With Valves bodies W9 - Type N	
<b>How to use:</b>	See instructions	
<b>Instructions:</b>	MN-000000 replacing silicone for PTFE Membrane	
<b>Material:</b>		
Steel Part:	AISI 316L(1.4404)	
Membrane	FDA approved PTFE	
<b>Key measurements</b>		
Drawing part A:	31.5 mm.	1.24 In.
Drawing part B:	123 mm.	4.85 In.
Drawing part C:	18 mm.	0.71 In.
Drawing part D:	32 mm.	1.26 In.
Net weight:	0.11 kg./pc	0.24lb.
Temp. range:	1 <sup>0</sup> C - 150 <sup>0</sup> C	34°F - 302°F
Product pressure range:	0 - 6 bar(g)	0 - 87 psi(g)