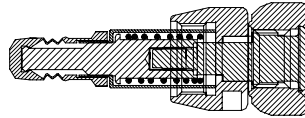
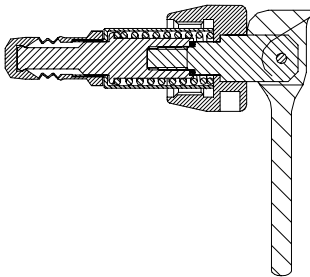


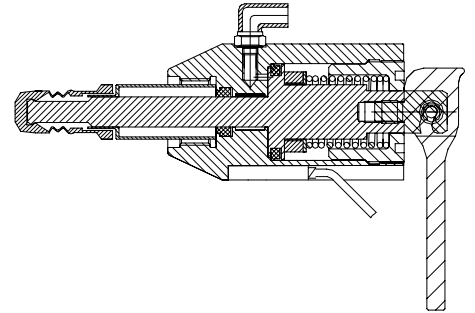
Valve head Type H
 Item no.: 600041/
 855541



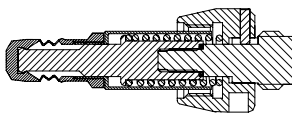
Valve head Type Q
 Item no.: 600043/
 855543



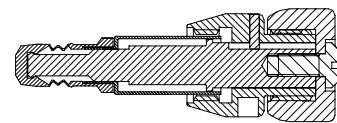
Valve head Type N
 Item no.: 600044 /
 855544



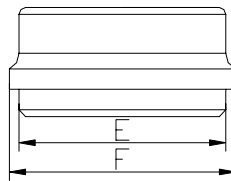
Valve head Type K
 Item no.: 600042/
 855542



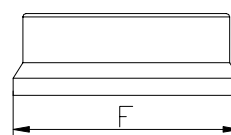
Valve head Type B
 Item no.: 600047/
 855547



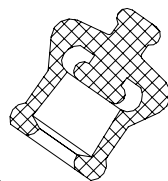
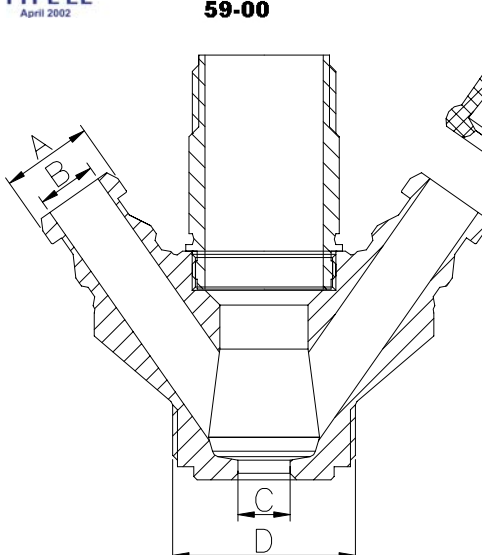
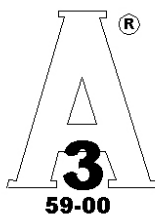
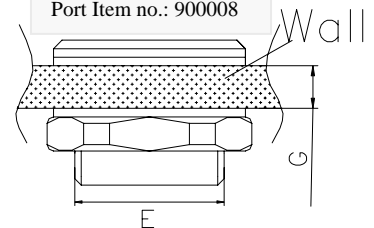
Port Item no.: 900036



Port Item no.: 900035



Port Item no.: 900008



Where to use :	Tanks (sockets)	M28x1.5
In / Outlet:	Hose piece	
Material:	AISI 316L	(1.4404)
Material certificate:	3.1.B	
Electropolish:	Outside	
Installation:	Weld port and threaded valve	
Key measurements		
Drawing part A:	Ø14 mm.	Ø0.55 In.
Drawing part B:	Ø9 mm.	Ø0.35 In.
Drawing part C:	Ø8 mm.	Ø0.31 In.
Drawing part D:	M28x1.5	
Drawing part E:	Ø 32mm.	Ø 1.26In.
Drawing part F:	Ø 35mm.	Ø 1.38In.
Drawing part G: Wall weight	Max: 12 mm	Max: 0.5 In
Inner surface:	Ra 0.5 µm	
Net weight: (exc. Socket)	0.36 kg./pc	0.79 lb
Working temperature depends on choice of valve head.		
Working pressure depends on choice of valve head.		