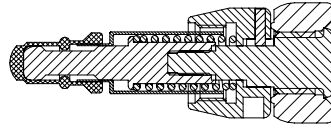
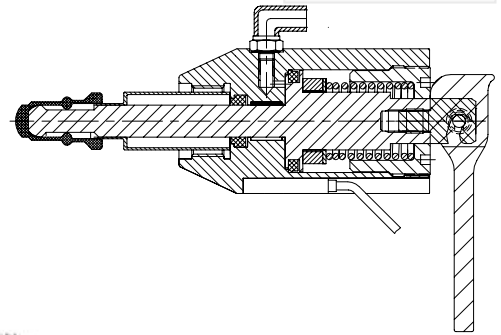


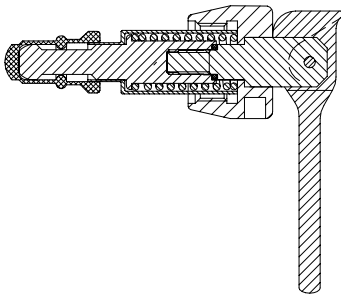
Valve head Type H
Item no.: 600041/
855541



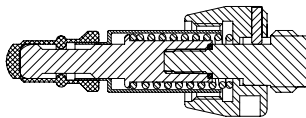
Valve head Type N
Item no.: 600044/
855544



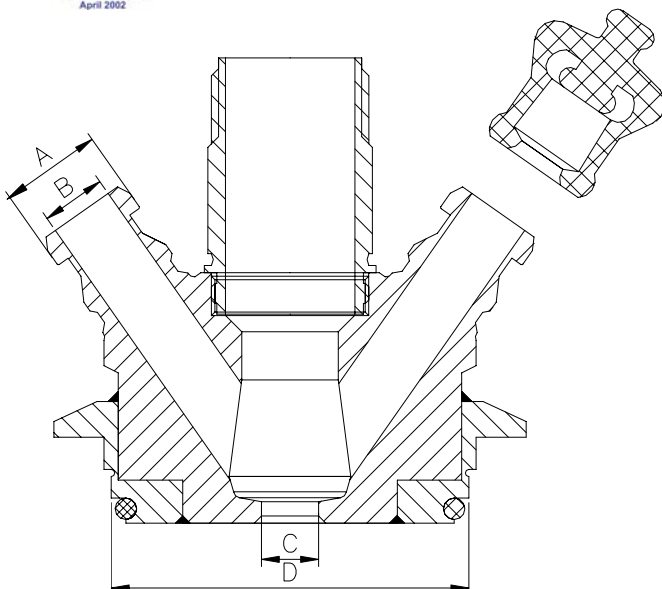
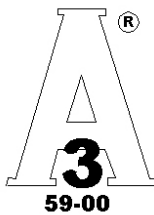
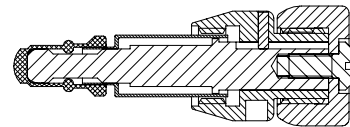
Valve head Type Q
Item no.: 600043/
855543



Valve head Type K
Item no.: 600042/
855542



Valve head Type B
Item no.: 600047/
855547



12.08.2004

Where to use :	Pipes and tanks	
Installation:	Varivent® in-line access unit.	
In / Outlet:	Hose piece	
Material:	AISI 316L	(1.4404)
Material certificate:	3.1.B	
Electropolish:	Outside	
Key measurements		
Drawing part A:	Ø14 mm.	Ø0.55 In.
Drawing part B:	Ø9 mm.	Ø0.35 In.
Drawing part C:	Ø8 mm.	Ø0.31 In.
Drawing part D:	Ø50 mm.	Ø1.1 In.
Inner surface:	Ra 0.5 µm	
Net weight:	0.5 kg./pc	1.1 lb
Working temperature depends on choice of valve head.		
Working pressure depends on choice of valve head.		