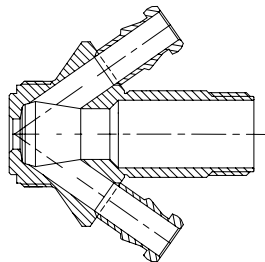
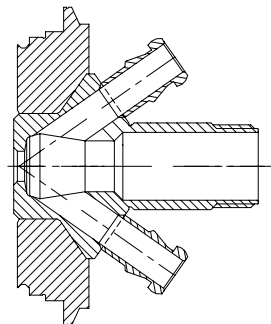


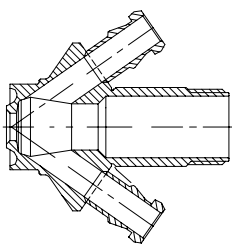
Valve body Type S  
Item no.: 850031



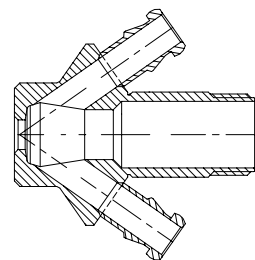
Valve body Type V  
Item no.: 850009



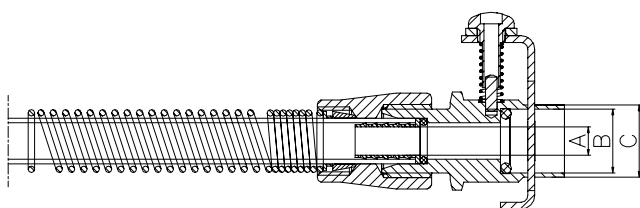
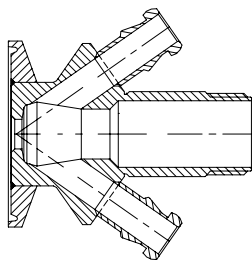
Valve body Type P  
Item no.: 850011



Valve body Type T  
Item no.: 850001



Valve body Type C  
Item no.: 850021



Where to use :

With W9 hose piece and  
PTFE tube size 10x1

**Material:**

Steel parts: AISI 316L (1.4404)  
Spring: AISI 304  
O-ring: Silicone

**Key measurements**

Drawing part A: Ø5 mm. Ø0.2 In.  
Drawing part B: Ø10 mm. Ø0.39 In.  
Drawing part C: Ø11.8 mm. Ø0.46 In.  
Net weight: 0.063 kg./pc 0.14lb  
Working Pressure: 0-10 bar(g) 0-145 psi(g)  
Working temperature depends on choice of valve head.  
Tube is available in all lengths.