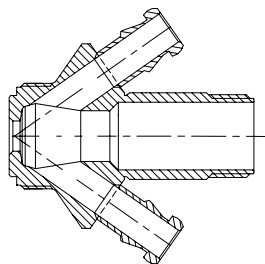
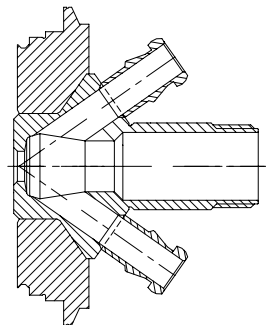


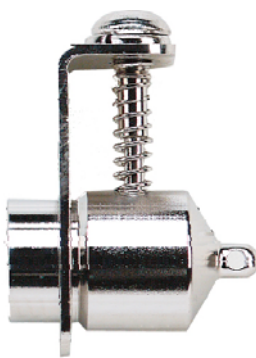
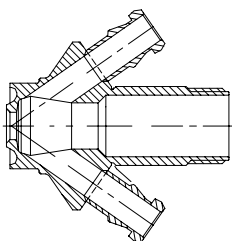
Valve body Type S  
Item no.: 850031



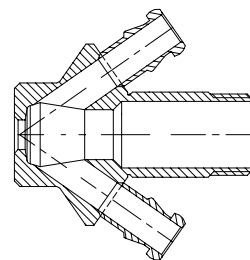
Valve body Type V  
Item no.: 850009



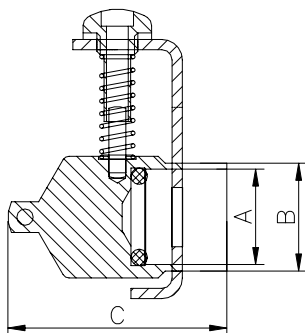
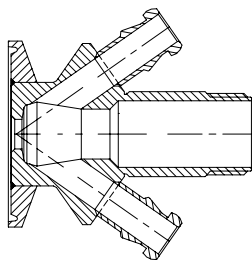
Valve body Type P  
Item no.: 850011



Valve body Type T  
Item no.: 850001



Valve body Type C  
Item no.: 850021



Where to use :

With W9 hose piece.

**Material:**

Steel parts:

AISI 316L (1.4404)

O ring:

Silicone

Working temperature depends on choice of valve head.

**Key measurements**

Drawing part A:

Ø14 mm. Ø0.55 In.

Drawing part B:

Ø15.8 mm. Ø0.62 In.

Drawing part C:

Ø32 mm. Ø1.26 In.

Net weight:

0.04 kg./pc 0.09lb

Working Pressure range:

0 - 15 bar(g) 0-217 psi(g)