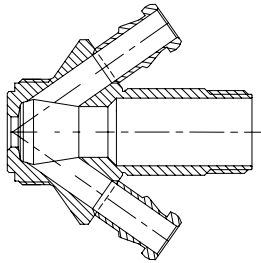
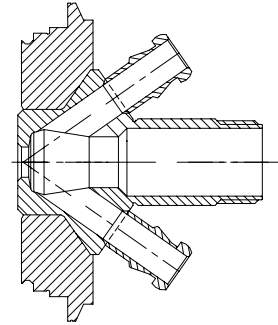


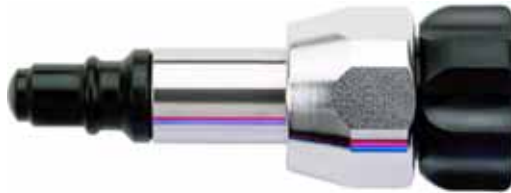
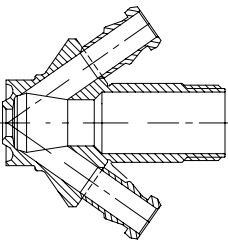
Valve body Type S
Item no.: 850031



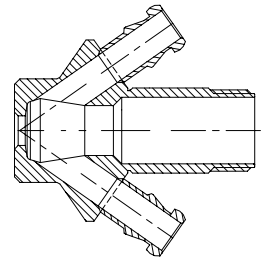
Valve body Type V
Item no.: 850009



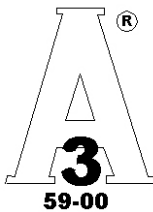
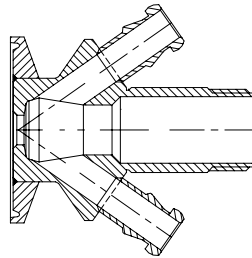
Valve body Type P
Item no.: 850011



Valve body Type T
Item no.: 850001



Valve body Type C
Item no.: 850021



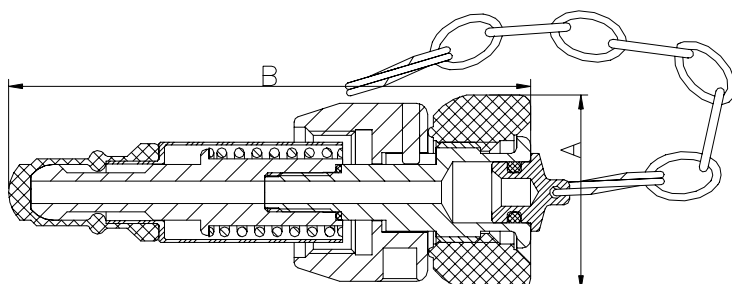
Spare parts:



Silicone membrane
Item no.: 600251



EPDM membrane
Item no.: 600252



Where to use :	W6, W8 and W9 valve bodies	
How to use:	Manually operated	
Installation:	Screwed in Valve body	
Material:		
Steel Parts:	AISI 304 / 316 / 316L(1.4404)	
Membrane	FDA approved silicone/EPDM	
Key measurements		
Drawing part A:	35 mm.	1.38 In.
Drawing part B:	94 mm.	3.7 In.
Net weight:	0.245kg./pc	0.55 lb
Temp. range:	1° C - 130° C	34° F - 266° F
Product pressure range:	0 - 6 bar(g)	0 - 87 psi(g)