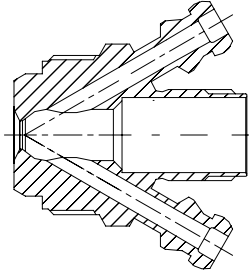
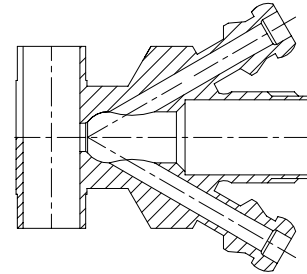


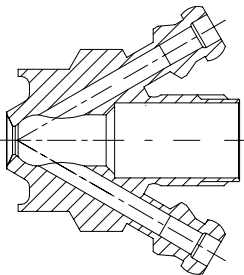
Valve body Type S
 Item no.: 400031



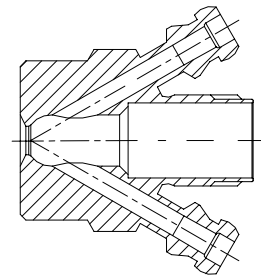
Valve body Type P
 Item no.: 400017



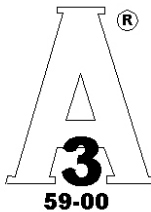
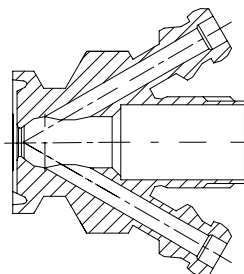
Valve body Type P
 Item no.: 400011



Valve body Type T
 Item no.: 400001



Valve body Type C
 Item no.: 400021



Available with:



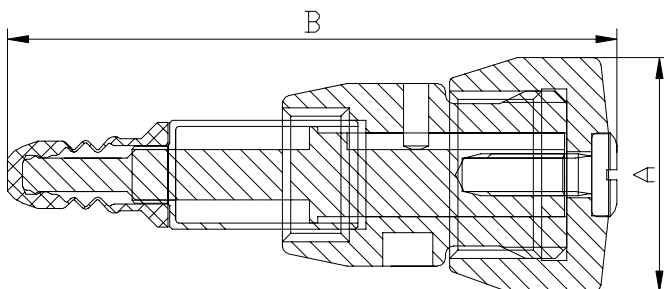
PTFE (TFM 1600)
 Membrane
 Item no. 400055



EPDM membrane
 Item no.: 400052
 See: 400047



C Silicone membrane
 Item no.: 400051
 See: 400047



Where to use :	With M4 valve bodies	
How to use:	Manually operated	
Installation:	Screwed in Valve body	
Material:		
Steel Parts:	AISI 301 / 303 / 316L(1.4404)	
Membrane	FDA approved PTFE	
Key measurements		
Drawing part A:	28 mm.	1.1 In.
Drawing part B:	74 mm.	2.91 In.
Net weight:	0.15 kg./pc	0.34 lb
Temp. range:	1 ^o C - 150 ^o C	34°F - 302°F
Product pressure range:	0 - 12 bar(g)	0 -174 psi(g)