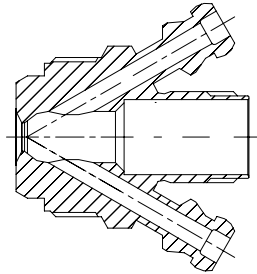
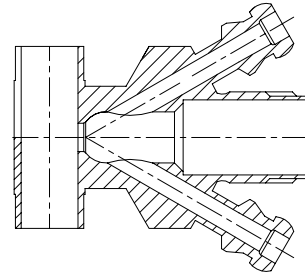


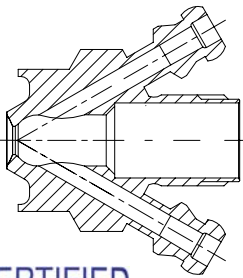
Valve body Type S
 Item no.: 400031



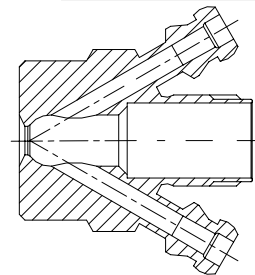
Valve body Type P
 Item no.: 400017



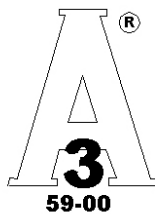
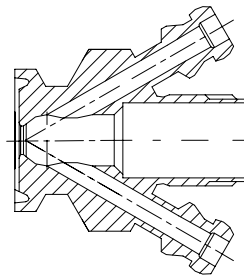
Valve body Type P
 Item no.: 400011



Valve body Type T
 Item no.: 400001



Valve body Type C
 Item no.: 400021

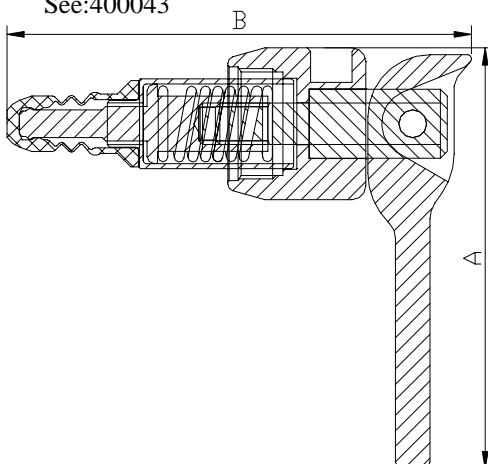


Available with:

PTFE (TFM 1600)
 Membrane
 Item no. 400055

EPDM membrane
 Item no.: 400052
 See: 400043

Silicone membrane
 Item no.: 400051
 See: 400043



Where to use :	With Valves bodies M4	
How to use:	Manually operated	
Installation:	Screwed in Valve body	
Material:		
Steel Parts:	AISI 304 / 316 / 316L(1.4404)	
Membrane	FDA approved PTFE	
Key measurements		
Drawing part A:	61 mm.	2.40 In.
Drawing part B:	67 mm.	2.64 In.
Net weight:	0.16 kg./pc	0.63 lb
Temp. range:	1 ⁰ C - 150 ⁰ C	34 ⁰ F - 302 ⁰ F
Product pressure range:	0 - 6 bar(g)	0 - 87 psi(g)
Please specify if EPDM membrane is requested		