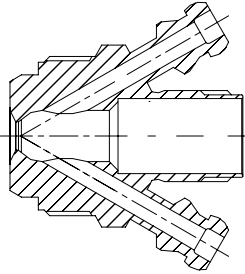
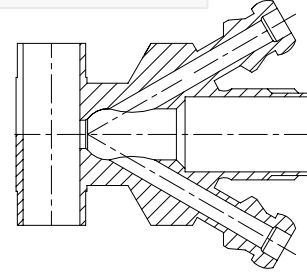


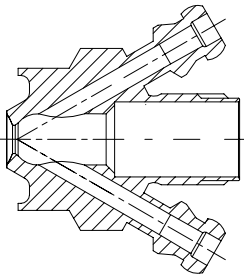
Valve body Type S
Item no.: 400031



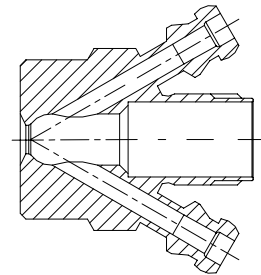
Valve body Type P
Item no.: 400017



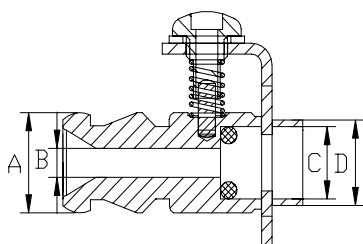
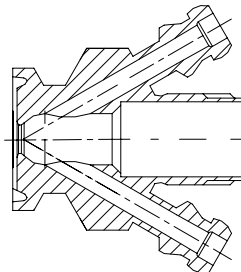
Valve body Type P
Item no.: 400011



Valve body Type T
Item no.: 400001



Valve body Type C
Item no.: 400021



Where to use :

With M4 hose piece

Material:

Steel parts:	AISI 316L	(1.4404)
O-ring:	Silicone	
Connection Male:	W9	
Connection female:	M4	

Key measurements

Drawing part A:	Ø14 mm	Ø0.55In.
Drawing part B:	Ø4 mm	Ø0.16 In.
Drawing part C:	Ø10 mm	Ø0.39 In.
Drawing part D:	Ø12 mm	Ø0.47 In.
Net weight:	0.03 kg./pc	0.07lb

Working Pressure depends on choice of valve head.

Working temperature depends on choice of valve head.