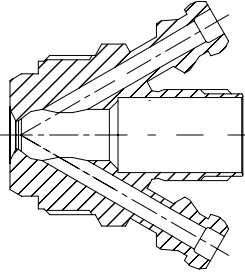
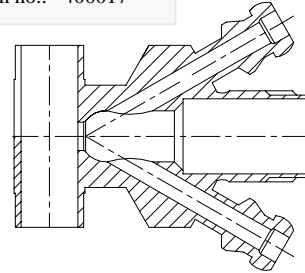


**Data sheet: 400085**  
**Item no. 400085**  
**M4 Quick release tube**  
**Fitting for OD13,5 / ID 5,0**  
**Tubing**

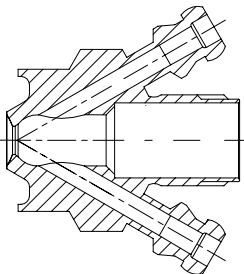
Valve body Type S  
Item no.: 400031



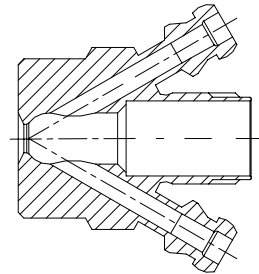
Valve body Type P  
Item no.: 400017



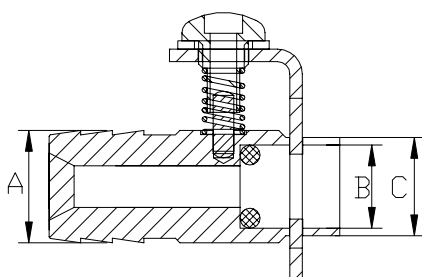
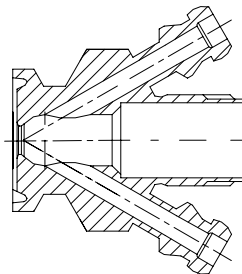
Valve body Type P  
Item no.: 400011



Valve body Type T  
Item no.: 400001



Valve body Type C  
Item no.: 400021



Where to use :	With M4 hose piece	
<b>Material:</b>		
Steel parts:	AISI 316L	(1.4404)
O-ring:	Silicone	
<b>Key measurements</b>		
Drawing part A:	ID5	OD13,5
Drawing part B:	Ø10 mm	Ø0.39 In.
Drawing part C:	Ø12 mm	Ø0.47 In.
Net weight:	0.03 kg./pc	0.07lb
Working Pressure depends on choice of valve head.		
Working temperature depends on choice of valve head.		