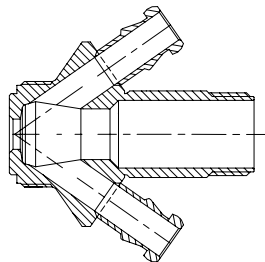
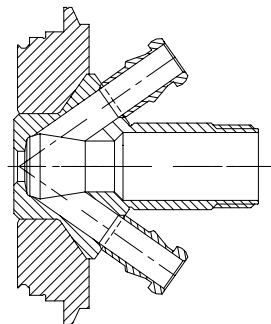


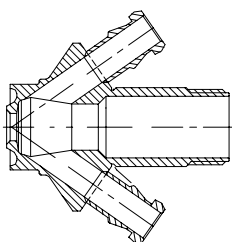
Valve body Type S
Item no.: 400031



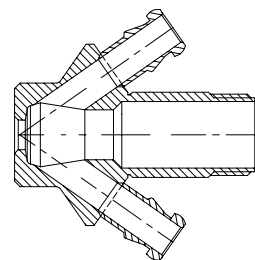
Valve body Type V
Item no.: 400009



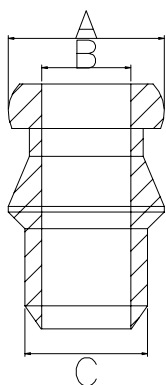
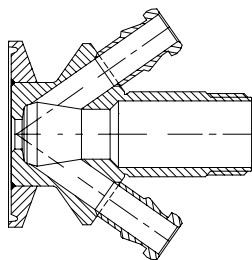
Valve body Type P
Item no.: 400011



Valve body Type T
Item no.: 400001



Valve body Type C
Item no.: 400021



Where to use :

M4 hose piece and pipes for welding

Use for:

To add M4 hose piece to a pipe with welding

Connections:

M4 and Welding liner

Material:

Steel parts:

AISI 316L (1.4404)

Key measurements

Drawing part A:

Ø9,9 mm. Ø0.40 In.

Drawing part B:

Ø8 mm. Ø0.32 In.

Drawing part C:

Ø10 mm. Ø0.39 In.

Net weight:

0.01 kg./pc 0.02lb

Working pressure depends on choice of valve head.

Working temperature depends on choice of valve head.